



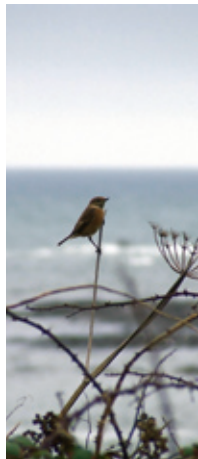
# Churchwood Valley



## **In harmony with nature – with all the comforts of home**

Staying at Churchwood Valley is about being in harmony with nature, while enjoying the comforts of home. Beautiful trees and shrubs surround each of our cabins and lodges, enhancing the view and providing quiet seclusion. You won't find clubs or bars, swimming pools or children's play areas. We have wildlife, not nightlife.

The natural environment attracts many birds - from nuthatches and blue tits to buzzards - and a host of mammals - from foxes to badgers and squirrels.



Inside the cabins, modern appliances meld into the homely timber construction, with much of the internal and external panelling coming from our own woods. From the newer DL6 lodges to the more traditional A3s, the furniture and equipment have been carefully selected to ensure a high degree of convenience and comfort. We also welcome well-behaved pets (up to two dogs), for a small charge.

Each cabin and lodge has its own secluded patio bordered by trees and shrubs, ensuring your privacy while you enjoy a quiet read or a barbeque. There is an allocated space for your car, with other spaces available for guests with more than one vehicle.



Churchwood has its own licensed store, which stocks all the basic things you need on holiday without having to make frequent trips to supermarkets or shopping centres. Next door there is a spacious information room with plenty of advice about things to do and places to visit. There is also a computer terminal for internet access and a Wi-Fi hot spot.

Our larger cabins have washing machines installed and we also provide a laundrette with washing and drying facilities.

We have extensive woodlands and paths - including about a mile of foreshore and beaches - all within a short stroll from the cabins, making Churchwood a popular destination for those who love walking, especially if they have dogs. From our beach, the South West Coast Path to the east takes you to the beautiful River Yealm and towards Plymouth to the west, via Wembury Point, Heybrook Bay, Bovisand and Jennycliff.

For those who seek other attractions, Plymouth is a mere 20 minutes drive away, while Cornwall and Dartmoor are also within easy reach. The picturesque coastal towns and rural villages of South Hams, plus some stunning beaches, are a modest drive from Churchwood Valley, while the Eden Project is a little over an hour away.





Churchwood-style cabins are built to the same standards as ordinary houses, but they are different in a number of ways. First they are clad in sweet chestnut planks that we have grown and sawn and seasoned at Churchwood. Inside, the wooden panelling and beams also come from our woods. The timber sets off the painted walls and ceilings, resulting in a warm and comfortable ambience that matches the tranquillity of the surroundings. And the large picture windows give you the best views possible.

Every cabin and lodge has a private patio with garden furniture, and barbecues are available on free loan when buying charcoal from the shop. Each also has a hanging basket – in which we use our own compost created from the trimmings of shrubs, bushes and trees on the site – and we ask our guests to water them regularly.

The Pinelodges are of a different design, with internal walls and ceilings all of pine, giving a more Scandinavian feel.

### ***Baby equipment and linen hire***

*A cotside for one bed is fitted in A6 and A4+ cabins only. We have a few high chairs and small travel cots for hire. Cot linen is NOT available.*

*Bed linen is NOT provided, but can be hired.*

### **All Cabins Feature:**

Modern kitchen with fridge/freezer/  
full sized cooker and microwave

Essential cutlery, crockery and glasses

Fully fitted bathroom or shower room

Most cabins have two single beds in main bedroom  
(which can be pushed together to make a king-size, but  
please note only single duvets are provided)  
and single beds in second bedrooms of larger cabins.  
Lodges and some cabins have double beds and duvets.

Bed head lights and shaver sockets

Large sliding picture windows

Colour TV, clock radio

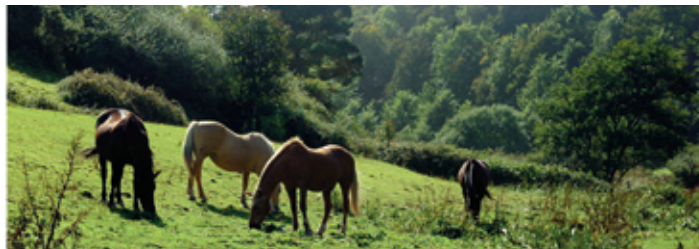
Central heating

Pillows, duvets, iron, ironing board and vacuum cleaner

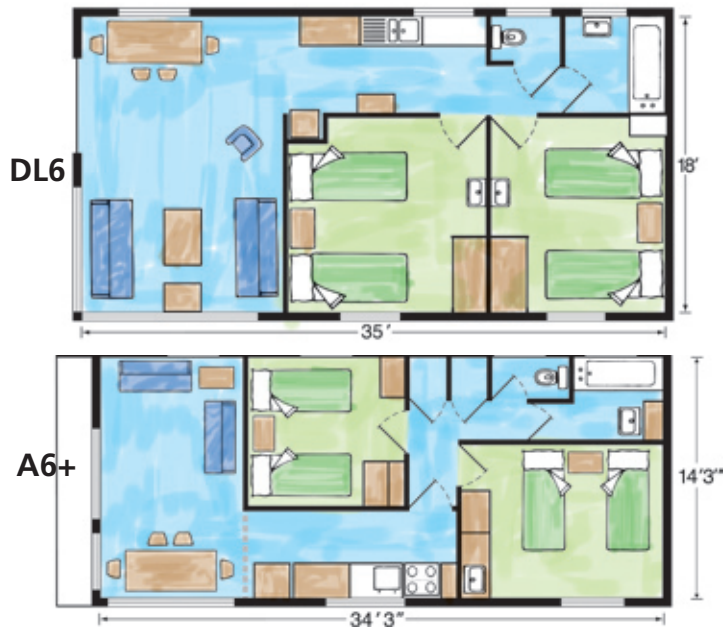
Fully equipped with everything for  
your holiday - except linen

FREE electricity - no extra to pay

***The naturally hilly landscape of Churchwood Valley means that only a few of our cabins are suitable for those who have mobility problems. If ease of access is important, please discuss this with our staff when making your reservation.***







*Left and below, kitchen and sitting room of a DL6*



## DL6 – Deluxe Lodges

This modern style of Churchwood Lodge has light and spacious interiors and provides a high level of creature comforts, such as dishwashers, washing machines and a TV with DVD player. They accommodate six people comfortably in two large front bedrooms and two sofa-beds in the sitting room. Sliding patio doors enhance the views of the valley over the decking patio.

## A6+ Cabins

These well-known larger two-bedroom Churchwood Cabins can sleep six in two bedrooms and sofa-beds in the lounge/ diner. Modern fitted kitchens with dishwashers and washing machines add to their comfort. Combined TV and VCR are included. Sliding patio doors open onto a paved patio.

*Below, lounge/dining area of an A6+.*



## Garden Lodge

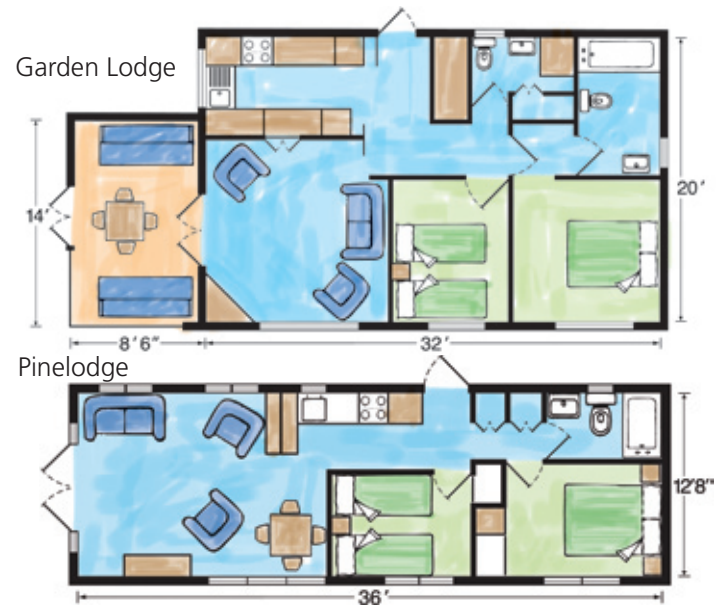
Garden Lodge remains extremely popular. With an en-suite bathroom, plus a second bathroom with a shower over a hip bath, and a separate sun lounge it is extremely spacious, sleeping six with ease. Each bedroom has roomy wardrobes, while the well-equipped kitchen has a large fridge freezer and a dishwasher. Good-sized cupboards provide space for the washing machine and other appliances. Located at the bottom of the valley, it sits in its own tranquil area of the site which teems with wildlife. It has an enclosed patio area, a secluded lawn and a carport.

Garden Lodge has a TV with a VCR/DVD player.

## Pinelodges

The five Pinelodges come from the same design stable, providing compact and stylishly comfortable accommodation for up to four people. The modern kitchen has a fridge beneath the worktop and plenty of worksurface. The bathroom has a hip bath with a shower over. The main bedroom has a double bed, a spacious wardrobe and overhead storage while the second bedroom has twin beds and a good sized wardrobe.

There is a 20" TV with built-in VCR.



*Breakfast in the sun outside Garden Lodge, below left.  
Below right, a Pinelodge kitchen.*



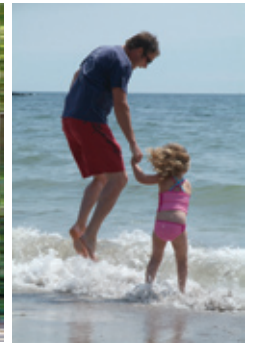


## A6 and A4+ cabins

Slightly smaller than the A6+s, these Churchwood-style cabins have different furniture to accommodate either six or four people. Both types have two bedrooms, and while the A6 has sofa beds in the lounge so it can sleep six, the A4+ has easy chairs and a sofa.

All have separate toilets, bathrooms with shower over, vanity units in the main bedroom, modern kitchens with good size fridge-freezers and microwaves. All have TVs.

Providing high levels of affordable comfort, they are located in popular parts of the site from the top of the valley to near the bottom, with secluded patios and views across the valley.



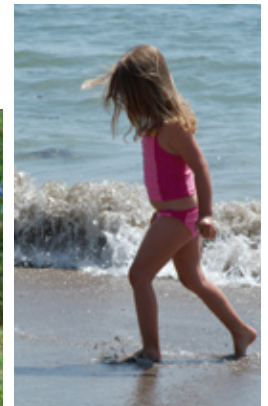


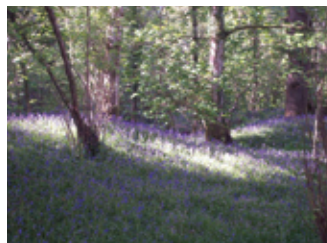
## A4, A3 and A2+ cabins

These smaller, one bedroom cabins are ideal for two people. The A3 and A4s have sofa beds, so they can sleep three or four people, and modern shower rooms, while the A2+s have en-suite bathrooms with shower over and sleep two.

Both types have compact kitchens with a fridge with a freezer compartment and microwave plus a standard cooker. All have TVs.

Located in the centre of the site, these compact cabins have peaceful and private patios and are frequently visited by wildlife on the park.





## Devon and the South Hams

Devon is a beautiful county and from your base at Churchwood there is something for everyone to see and do – from merely enjoying a stroll along the nearby coastal path to trying your hand at fishing or surfing or from walking on Dartmoor to sightseeing in one of South Hams picturesque small towns. If shopping is your thing, the new Drake shopping centre in Plymouth is proving to be a massive attraction, while the city also boasts the National Marine Aquarium, Plymouth Pavilions and other entertainment centres.

The area is home to sports centres, wildlife parks and golf clubs, not to mention National Trust properties. A short drive away you can enjoy the wonders of the Eden Project and the delights of renowned houses and gardens both in Devon and nearby Cornwall.

If fishing or boating appeal there is lots of choice from Wembury Bay, the Tamar and Yealm rivers to the sheltered waters of Plymouth Sound, and the Mountbatten Centre for Sailing and Watersports.

Close to home, we have the Wembury Bay Riding School near to our beach, a few minutes walk from the cabins. ABRS and RDA approved, there is a good selection of horses and ponies and many woodland and coastal rides and walks.

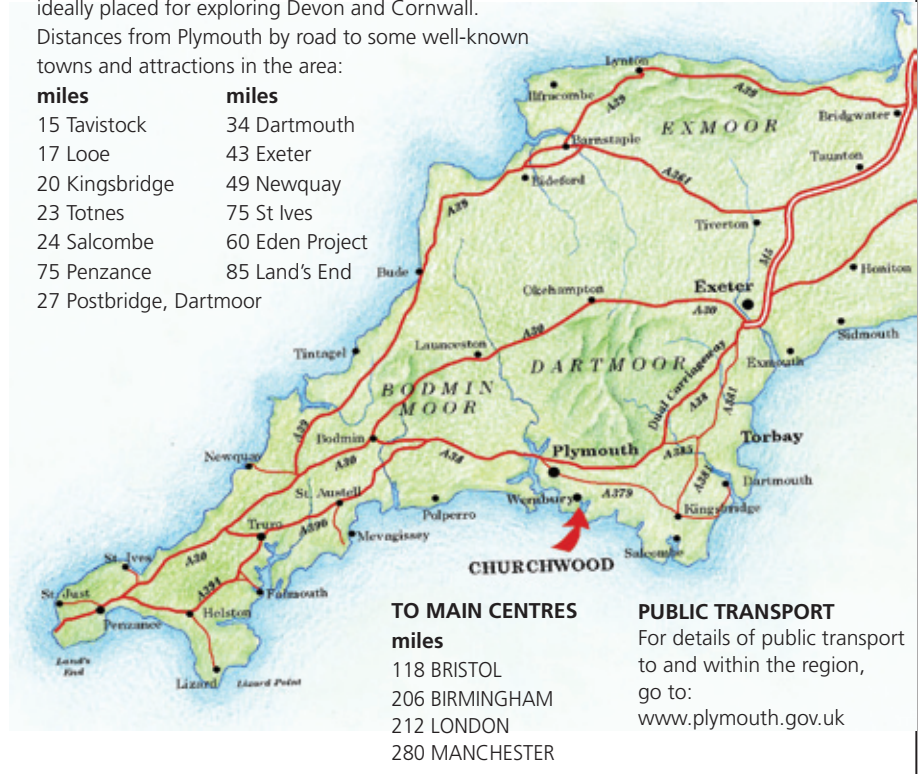


## Churchwood Valley –

ideally placed for exploring Devon and Cornwall.

Distances from Plymouth by road to some well-known towns and attractions in the area:

miles	miles
15 Tavistock	34 Dartmouth
17 Looe	43 Exeter
20 Kingsbridge	49 Newquay
23 Totnes	75 St Ives
24 Salcombe	60 Eden Project
75 Penzance	85 Land's End
27 Postbridge, Dartmoor	



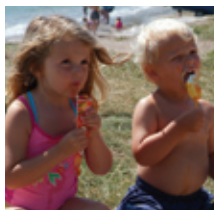
*Pictured – above left, top to bottom – are: The s-shaped woods in the lower half of the picture conceal the cabins at Churchwood.*

*Hay Tor on Dartmoor, near Bovey Tracy, is spectacular and offers lovely walks. Burgh Island, and its famous sea tractor, is a short drive from Churchwood.*





*For  
Quality  
Go  
Graded*



## Churchwood – a very special place

Welcome to Churchwood! We hope that you have found this brochure, helpful and informative. We aim to present you with all the vital information you need before booking a holiday with us, and to ensure that it is accurate and relevant.

Churchwood stays the same as it has been for decades – green and tranquil, teeming with birds and other wildlife, the perfect place to relax and recuperate from the stresses of modern life. We persevere with our efforts to improve the conservation measures that have attracted gold awards from Professor David Bellamy and the Green Tourism Business Scheme, and we endeavour to improve the quality of holidays in accordance with the Four Stars we have been awarded by Enjoy England.

With your help, we continue to recycle everything from plastic bottles and film to cans and cardboard. The vegetable waste, together with trimmings from trees and shrubs and bushes from around the park, end up as compost that we use in hanging baskets and around other plants. We strive to minimise our impact on the environment – opting wherever possible for low energy lamps and more efficient appliances – and do everything we can to protect and encourage our wildlife.

We, and our helpful and welcoming staff, look forward to greeting you on arrival for what we are sure will be a memorable holiday.

**John & Shirley Stansell**

Churchwood Valley Holiday Cabins, Wembury Bay, Plymouth, South Devon PL9 0DZ

Tel: 01752 862382 Fax: 01752 863274 [www.churchwoodvalley.com](http://www.churchwoodvalley.com) email: [churchwoodvalley@btconnect.com](mailto:churchwoodvalley@btconnect.com)

Photography: Karen Taylor 01392 215863, Julia Wherrell 01647 440044, John Melville 01392 494333, John Henson 01752 690355, Tim Stanger 01548 852419.